

# Efficient Algorithms for the Minimum Shortest Path Steiner Arborescence Problem with Applications to VLSI Physical Design

Jason Cong, *Senior Member, IEEE*, Andrew B. Kahng, *Associate Member, IEEE*, and Kwok-Shing Leung, *Member, IEEE*

**Abstract**—Given an undirected graph  $G = (V, E)$  with positive edge weights (lengths)  $w: E \rightarrow \mathbb{R}^+$ , a set of terminals (sinks)  $N \subseteq V$ , and a unique root node  $r \in N$ , a *shortest path Steiner arborescence* (hereafter an *arborescence*) is a Steiner tree rooted at  $r$  spanning all terminals in  $N$  such that every source-to-sink path is a shortest path in  $G$ . Given a triple  $(G, N, r)$ , the **minimum shortest path Steiner arborescence (MSPSA) problem** seeks an arborescence with minimum weight. The MSPSA problem has various applications in the areas of physical design of very large-scale integrated circuits (VLSI), multicast network communication, and supercomputer message routing; various cases have been studied in the literature. In this paper, we propose several heuristics and exact algorithms for the MSPSA problem with applications to VLSI physical design. Experiments indicate that our heuristics generate near optimal results and achieve speedups of orders of magnitude over existing algorithms.

**Index Terms**—Algorithm, physical design, Steiner arborescence, Steiner tree, VLSI.

## I. INTRODUCTION

**G**IVEN an undirected graph  $G = (V, E)$  with positive edge weights (lengths)  $w: E \rightarrow \mathbb{R}^+$ , a set of terminals (sinks)  $N \subseteq V$ , and a unique root node  $r \in N$ , a *shortest path Steiner arborescence* (hereafter an *arborescence*) is a Steiner tree rooted at  $r$  spanning all terminals in  $N$  such that every source-to-sink path is a shortest path in  $G$ . Given a triple  $(G, N, r)$ , the **minimum shortest path Steiner arborescence (MSPSA) problem** seeks an arborescence with minimum weight.

The MSPSA problem is a special case of the minimum Steiner arborescence (MSA) problem, which has been well studied in the literature (for example, [14] and [17]). Given a triple  $(G, N, r)$  wherein  $G$  is a directed graph, the MSA problem seeks a minimum-weight Steiner tree spanning all nodes in  $N$  with all edges directed away from  $r$ . If  $G'$  is the

shortest path directed acyclic graph of  $G$  (defined in the next section), it is easy to see that an MSA of  $G'$  is an MSPSA of  $G$ . Both the MSA and the MSPSA problems are NP-hard [4], [17].

The rectilinear version of the MSPSA problem is called the minimum rectilinear Steiner arborescence (MRSA) problem. Given a set of terminals  $N$  (including the root  $r$  located at the origin), let  $G_{H(N)} = (V_{H(N)}, E_{H(N)})$  be the induced Hanan grid graph [15] of  $N$ . It can be shown that an MSPSA of  $(G_{H(N)}, N, r)$  is an MRSA of  $N$ .

The MSPSA and MRSA problems have applications to performance-driven very-large-scale-integration (VLSI) physical design. Cong *et al.* showed that rectilinear Steiner arborescences outperform traditional heuristic Steiner minimum trees for delay optimization in submicron process technology by up to 66% [10]. Alexander and Robins applied the PFA and IDOM algorithms to route timing-critical nets in field programmable gate arrays (FPGA's) [1]. Cong and Madden [11] proposed a multisource routing algorithm based on constructing minimum-cost, minimum-diameter arborescences.

Exact methods for the MRSA problem can be classified into 1) dynamic programming (DP), 2) integer programming, 3) branch-and-bound (BNB)/enumeration techniques, and 4) min-cost max-flow (MCMF) technique. The DP-based approach was first used in the work of Ladeira de Matos [20] and more recently in the RSA/DP algorithm by Leung and Cong [22]. Nastansky *et al.* [24] formulated the MRSA problem (and its  $D$ -dimensional generalization) as an integer program and solved it with implicit enumeration techniques. Cong and Leung presented the *Atree/BnB*[9] and *RSA/BnB* [22] algorithms, both of which employ branch-and-bound techniques to effectively prune the search space. Ho *et al.* [16] gave two exhaustive enumeration algorithms with  $O(|N|^{3k})$  ( $k$  is the number of “dominating” layers) and  $O(|N|^2 3^{|N|})$  runtime complexities, respectively. Despite previous efforts, the question of whether the MRSA problem can be solved in polynomial time is still open.<sup>1</sup>

Rao *et al.* [25] presented the RSA algorithm, which was the first known heuristic for the MRSA problem. The RSA

<sup>1</sup>In 1985, Trubin [28] formulated the MRSA problem as an integer program and claimed that its dual relaxation (which is a linear program) always contains an integral solution; hence, the MRSA problem is polynomial-time solvable. Such a claim was subsequently refuted in [25]. A more recent attempt to reduce the MRSA problem to a variant of the MCMF problem [2] was subsequently withdrawn by its author [3].

Manuscript received June 20, 1997. The work of J. Cong was partially supported by the National Science Foundation under NSF Young Investigator Award MIP-9357582. This paper was recommended by Associate Editor M. Sarrafzadeh.

J. Cong is with the Computer Science Department, University of California, Los Angeles 90095 USA.

A. B. Kahng was with Cadence Design Systems, San Jose, CA 95134 USA. He is now with the Computer Science Department, University of California, Los Angeles 90095 USA (e-mail: abk@cs.ucla.edu).

K.-S. Leung was with Cadence Design Systems, San Jose, CA 95134 USA. He is now with Magma Design Automation, Palo Alto, CA 94303 USA (e-mail: ksleung@cs.ucla.edu).

Publisher Item Identifier S 0278-0070(98)02050-8.

output has length no more than twice the optimal length, with runtime being  $O(|N| \log |N|)$  if all terminals are located in the first quadrant and  $O(|N|^3 \log |N|)$  in the general case. The runtime for the general case was improved to  $O(|N| \log |N|)$  by Córdova and Lee [12]. In [10], Cong *et al.* presented the Atree algorithm based on making “safe moves.” Téllez and Sarrafzadeh [27] gave the pRDPT algorithm, which is based on optimally solving a restricted version of the MRSA problem. More recently, Kahng and Robins gave a simple adaptation of their iterated 1-Steiner algorithm to the MRSA problem [19], and Leung and Cong presented the  $k$ -IDeA algorithm, whose performance is very close to optimal in practice [23].

The hypercube version of the MSPSA problem, also called the optimal communication tree or optimal multicast tree problem in the literature, has been studied by Choi *et al.* [4], [5], Lan *et al.* [21], and Sheu and Su [26]. The problem is NP-hard [4], and heuristics include the LEN heuristic [21], the COVER heuristic [4], and the more recent ShSu heuristic [26].

There has been relatively little research on the general MSPSA problem. In [1], Alexander and Robins presented the path folding (PFA) algorithm, an adaptation of the RSA heuristic; and the IDOM algorithm, which iteratively adds the best Steiner node as a terminal (analogous to the Iterated 1-Steiner algorithm). They further showed that the MSPSA problem cannot be approximated within a factor of  $\Theta(\log |N|)$  times optimal unless deterministic polylog space coincides with nondeterministic polylog space.

In this paper, we propose three heuristics and two exact algorithms for the MSPSA problem in the following order ( $\square$  = exponential-time exact algorithm,  $\triangle$  = polynomial-time heuristic):

- $(\triangle)$  RSA/G (Section III): an efficient adaptation of the greedy RSA heuristic in [25];
- $(\square)$  RSA/BnB/G (Section IV): an optimal exponential-time branch-and-bound variant of RSA/G (analogous to the RSA/BnB algorithm in [22]);
- $(\square)$  RSA/DP/G (Section V): a fast implementation of RSA/BnB/G based on dynamic programming (analogous to the RSA/DP algorithm [22]);
- $(\triangle)$   $k$ -IDeA/G (Section VI): a “scaled-down” near optimal version of RSA/BnB/G;
- $(\triangle)$   $k$ -IA/G (Section VII): a natural dual of  $k$ -IDeA/G that implements the IDOM heuristic [1] efficiently.

Experiments indicate that our heuristics generate near optimal results and achieve speedups of *orders* of magnitude over existing arborescence algorithms.

## II. PRELIMINARIES

Given  $G = (V, E)$ , we define the *distance label* of  $v \in V$ , denoted  $\Delta(v)$ , to be the shortest path distance of  $v$  from  $r$  in  $G$ . The shortest path directed acyclic subgraph (SPDAG) of  $G$  is denoted  $G' = (V', E')$ , with  $V' = V$  and the directed edge  $(v, v') \in E'$  if and only if  $(v, v') \in E$  and  $\Delta(v') - \Delta(v) = w(v, v')$ . Clearly, any arborescence of  $G$  is a subgraph of  $G'$ ; hence, we focus on solving the MSPSA

problem on SPDAG's (with proper orientation of the edges).<sup>2</sup> Given a general graph  $G$ , its SPDAG  $G'$  can be constructed in  $O(|E| + |V| \log |V|)$  time using Dijkstra's algorithm with a Fibonacci heap [13]. We rank the nodes of  $V$  in order of increasing distance labels, and we use  $v_i$ ,  $1 \leq i \leq |V|$  to denote the  $i$ th-ranked node, where  $v_1$  is the root and  $v_{|V|}$  is the farthest node from the root (Dijkstra's algorithm can be modified to output this ranking without increasing runtime or space complexity). The following discussion assumes that the input graph  $G$  is already an SPDAG, and we do not distinguish between  $G$  and  $G'$  unless otherwise noted. For simplicity, we further assume that  $v_{|V|}$  is a terminal (otherwise, we can find the maximum  $i$  such that  $v_i \in N$  and remove nodes  $v_{i+1}, \dots, v_{|V|}$  and their incident edges from  $G$ , since none of them are in any source-to-sink shortest path).

Given  $(v, v') \in E$ ,  $v$  is called a *parent* of  $v'$  and  $v'$  a *child* of  $v$ . We use  $C_i$  to denote the set of children of  $v_i$  in  $G$ . That is,  $C_i = \{v | (v_i, v) \in E\}$ . Given two nodes  $v, v' \in V$ , we say  $v'$  is *reachable* from  $v$ , denoted  $v \preceq v'$ , if and only if there exists a (directed) path in  $G$  from  $v$  to  $v'$ , and  $v \prec v'$  if and only if  $v \preceq v'$  and  $v \neq v'$ . If  $v \preceq v'$ , then  $v \rightsquigarrow v'$  denotes a shortest path from  $v$  to  $v'$  in  $G$  ( $v'$  is called a child of  $v$  in the arborescence). Unless otherwise noted, in the following we assume  $v, v', v'' \in V$  and  $1 \leq i, j, k \leq |V|$ .

## III. THE RSA/G ALGORITHM

We begin by reviewing the MRSA problem. Recall that a rectilinear Steiner arborescence is a Steiner tree in the Manhattan plane spanning all terminals in  $N$  such that each source-to-sink path is a rectilinear shortest path. In [25], Rao *et al.* presented the RSA heuristic, which constructs an arborescence in a bottom-up fashion starting with  $|N|$  subtrees, each consisting of a terminal in  $N$ . RSA iteratively *merges* a pair of subtree roots  $v$  and  $v'$  such that  $\langle v, v' \rangle$  is as far from the source as possible, where  $\langle v, v' \rangle$  is the point on the bounding box of  $v$  and  $v'$  that is closest to  $r$ . The algorithm terminates when only one subtree remains.

A straightforward generalization of RSA to the MSPSA problem is as follows. Let  $P$  be the set of active root nodes (initially  $P = N$ ). Then, iteratively find a node  $v \in V$  such that 1) there exist  $v', v'' \in P$  ( $v' \neq v''$ ) with  $v \preceq v'$  and  $v \preceq v''$  and 2)  $\Delta(v)$  is maximized among all such nodes satisfying 1). Then, for each  $v' \in P$  with  $v \preceq v'$ , construct a shortest path  $v \rightsquigarrow v'$  and remove  $v'$  from  $P$ . Last, insert  $v$  into  $P$ . This process is repeated until  $P = \{r\}$ . Alexander and Robins gave a straightforward implementation of this approach, called the path folding algorithm (PFA) [1]. Because the PFA algorithm requires frequent computation of the least common ancestor of pairs of nodes in the SPDAG [up to  $O(|V||N|^2)$  times], its overall time complexity is  $O(|N||E| + |V||N|^2 \log |V|)$ .

We adopt a slightly different approach, visiting the nodes in  $V$  in decreasing rank order (i.e., starting from  $v_{|V|}$ ) and

<sup>2</sup>Actually, any arborescence is a subgraph of  $G'' = (V'', E'')$ , where  $v \in V'' \subseteq V'$  if and only if  $v$  is on a shortest path from  $r$  to some  $t \in N$ , and  $(v, v') \in E'' \subseteq E'$  if and only if  $v, v' \in V''$  and  $(v, v') \in E'$ . In other words,  $G''$  is the union of all the shortest paths from the root to the sinks. Although  $G''$  can be substantially smaller than  $G'$ , to simplify the discussion, we focus on  $G$  and  $G'$ .

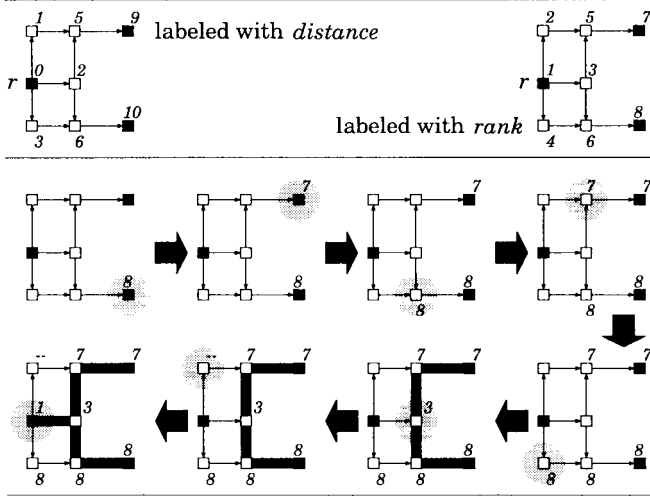


Fig. 1. An example run of the RSA/G algorithm. The upper left figure shows an SPDAG with nine nodes and three terminals (one of which is the root  $r$ ), wherein each node is labeled with its distance from  $r$ . The upper right figure shows the ranking of the nodes (based on the distances), and RSA/G will visit the nodes in decreasing rank order. We label the node  $v_i$  with the unique element (if any) of the set  $Y_i$  after  $v_i$  is visited. The execution is:  $v_8, v_7$  (TMO),  $v_6, v_5, v_4$  (no action),  $v_3$  (SMO,  $v_3 \rightsquigarrow v_7$  and  $v_3 \rightsquigarrow v_8$ ),  $v_2$  (no action),  $v_1$  (TMO,  $v_1 \rightsquigarrow v_3$ ). The  $P_i$  are as follows:  $P_9 = \emptyset, P_8 = \{v_8\}, P_7 = P_6 = P_5 = P_4 = \{v_7, v_8\}, P_3 = P_2 = \{v_3\}, P_1 = \{v_1\}$ . The  $A_i$  are as follows:  $A_9 = A_8 = A_7 = A_6 = A_5 = A_4 = \emptyset, A_3 = A_2 = \{v_3 \rightsquigarrow v_7, v_3 \rightsquigarrow v_8\}, A_1 = \{v_1 \rightsquigarrow v_3, v_3 \rightsquigarrow v_7, v_3 \rightsquigarrow v_8\}$ .

maintaining a *peer set* consisting of all the subtree roots whose ranks are higher than the rank of the current node. We use  $P_i$  and  $A_i$ , respectively, to indicate the peer set and the partially constructed arborescence after visiting  $v_i$  (and before visiting  $v_{i-1}$ ). Let  $X_i = \{v | v_i \prec v \text{ and } v \in P_{i+1}\}$  be the subset of  $P$  reachable from  $v_i$  just before  $v_i$  is visited). There are three possible scenarios:

- terminal merger opportunity (TMO):  $v_i \in N$ ;
- Steiner merger opportunity (SMO):  $v_i \notin N$  and  $|X_i| > 1$ ;
- otherwise  $v_i \notin N$  and  $|X_i| \leq 1$ .

If either TMO or SMO applies, we *merge* all the nodes in  $X_i$  (if any) into  $v_i$  and update the peer set and the arborescence, respectively, i.e.,  $P_i = P_{i+1} - X_i + \{v_i\}$  and  $A_i = A_{i+1} + \{v_i \rightsquigarrow v | v \in X_i\}$ . Otherwise,  $P_i = P_{i+1}$  and  $A_i = A_{i+1}$  (neither the peer set nor the arborescence is changed). The algorithm starts with  $A_{|V|+1} = \emptyset$  and  $P_{|V|+1} = \emptyset$  and terminates once  $P_1$  and  $A_1$  are computed;  $A_1$  is returned. An example is shown in Fig. 1. The time complexity depends on how fast  $X_i$  is computed, and the following three theorems show that this can be done efficiently.

**Theorem 1:** Given  $i, j$  with  $j \leq i, v_i \in P_j \Rightarrow v_i \in P_k$  for any  $j \leq k \leq i$ .

*Proof:* For any node  $v_i, 1 < i \leq |V|$ , either 1) there does not exist any  $k$  such that  $v_i \in P_k$ , or 2) there exists  $i' < i$  such that  $v_i \in P_k$  for all  $i' \leq k \leq i$  and  $v_i \notin P_k$  for all  $k < i'$  or  $k > i$ . Therefore, if there exists  $j \leq i$  such that  $v_i \in P_j$ , it is necessary that case 2) applies, and so  $v_i \in P_k$  for any  $k$  such that  $i' \leq j \leq k \leq i$ , where  $i' \leq j$ .  $\square$

**Theorem 2:** Let  $Y_i = \{v | v_i \preceq v \text{ and } v \in P_i\}$  be the subset of  $P$  reachable from  $v_i$  immediately after  $v_i$  is visited. Then  $X_i = (\cup_{v_j \in C_i} Y_j) \cap P_{i+1}$ .

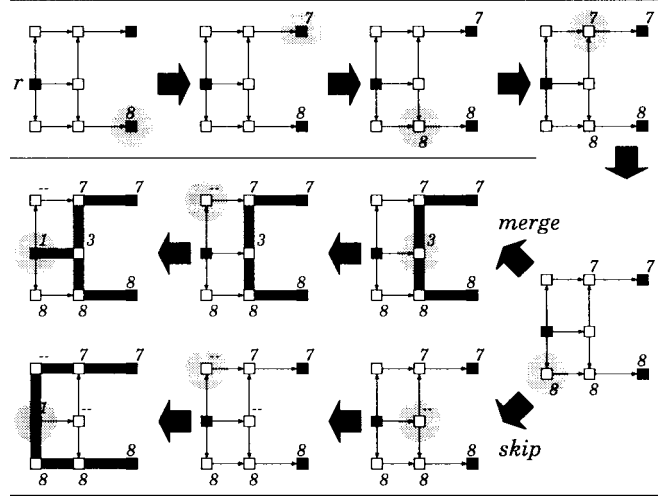


Fig. 2. An example run of the RSA/BnB/G algorithm, based on the previous example. Like RSA/G, RSA/BnB/G visits the nodes in decreasing rank order. We label the node  $v_i$  with the unique element (if any) of the set  $Z_i$  after  $v_i$  is visited. Two branches are created at  $v_3$ , since it is an SMO, one corresponding to *skipping* and one to *merging*. Both branches are executed, and the branch with the lowest total weight is the optimal arborescence (the merging branch in this example). For the merging branch, the  $P_i$  and  $A_i$  are as follows:  $P_3 = P_2 = \{v_3\}, P_1 = \{v_1\}, A_3 = A_2 = \{v_3 \rightsquigarrow v_7, v_3 \rightsquigarrow v_8\}, A_1 = \{v_1 \rightsquigarrow v_3, v_3 \rightsquigarrow v_7, v_3 \rightsquigarrow v_8\}$ . For the skipping branch:  $P_3 = P_2 = \{v_7, v_8\}, P_1 = \{v_1\}, A_3 = A_2 = \emptyset, A_1 = \{v_1 \rightsquigarrow v_7, v_1 \rightsquigarrow v_8\}$ .

*Proof:*

$$\begin{aligned}
 v \in X_i &\Leftrightarrow v_i \prec v \text{ and } v \in P_{i+1} \\
 &\Leftrightarrow \exists v_j \in C_i \text{ s.t. } v_j \preceq v \text{ and } v \in P_{i+1} \\
 &\Leftrightarrow \exists v_j \in C_i \text{ s.t. } v_j \preceq v, v \in P_j \text{ and } v \in P_{i+1} (*) \\
 &\Leftrightarrow \exists v_j \in C_i \text{ s.t. } v \in Y_j \text{ and } v \in P_{i+1} \\
 &\Leftrightarrow v \in \cup_{v_j \in C_i} Y_j \text{ and } v \in P_{i+1} \\
 &\Leftrightarrow v \in (\cup_{v_j \in C_i} Y_j) \cap P_{i+1}
 \end{aligned}$$

where  $(*)$  denotes the application of Theorem 1 (note that  $i+1 \leq j$ ) in the  $\Rightarrow$  direction.  $\square$

**Theorem 3:**  $|Y_i| \leq 1$  for  $1 \leq i \leq |V|$ .

*Proof:* We prove this inductively. The theorem holds for  $i = |V|$  since  $Y_{|V|} = \{v_{|V|}\}$ . Assume that  $|Y_{i+1}| \leq 1$  for some  $i$ ; we will show that this implies  $|Y_i| \leq 1$ . According to the algorithm, in the case of TMO or SMO (where  $v_i \in N$  or  $|X_i| > 1$ ), we have  $P_i = P_{i+1} - X_i + \{v_i\}$  and, therefore,  $|Y_i| = |\{v_i\}| = 1$ . Otherwise,  $v_i \notin N$  and  $|X_i| \leq 1$ , and so we have  $P_i = P_{i+1}$  and  $|Y_i| = |Y_{i+1}| \leq 1$ .  $\square$

These theorems lead to a very efficient scheme to determine  $X_i$ . First, Theorem 3 indicates that  $Y_i$  has either zero or one element. Therefore, we can use constant per-node memory to store the set  $Y_i$  at the node  $v_i$  after visiting  $v_i$ . Second, Theorem 2 implies that  $X_i$  can be computed by first taking the union of  $Y_j$  for each child  $v_j$  of  $v_i$  and then intersecting with  $P_{i+1}$ . We can perform the union and intersection operations in time linear in the number of children,<sup>3</sup> and so the time complexity of visiting  $v_i$  is  $O(|C_i|)$ .

<sup>3</sup>This is achieved by properly indexing the sinks and Steiner nodes. Note that this is possible despite the fact that there can be many more nodes in the peer set than  $|C_i|$ .

TABLE I  
THE RSA/G ALGORITHMS. (a) TMO OR SMO AND (b) OTHERWISE

<b>Function RSA/G(<math>G, N</math>, deleted)</b>	
Given an SPDAG $G = (V, E)$ with ranked nodes, a set of terminals $N \in V$ , and the array marking permanently deleted nodes, return the arborescence according to the RSA/G algorithm.	
Globals: $Y$	
$i \leftarrow  V  + 1;$	
$P \leftarrow \emptyset;$	
$A \leftarrow \emptyset;$	
<b>while</b> $i > 1$ <b>do</b>	
$i \leftarrow i - 1;$	
$X \leftarrow (\cup_{v_j \in C_i} Y_j) \cap P;$	
<b>if</b> $v_i \in N$ <b>or</b> ( $ X  > 1$ <b>and</b> $\text{deleted}[i] = \text{false}$ ) <b>then</b>	
(a)	$Y_i \leftarrow \{v_i\};$
	$P \leftarrow P - X + \{v_i\};$
	$A \leftarrow A + \{v_i \rightsquigarrow v \mid v \in X\};$
	<b>else</b>
(b)	$Y_i \leftarrow X;$
<b>return</b> $A;$	

The overall time complexity is  $\sum_{i=1}^{|V|} O(|C_i|) = O(|E|)$ , or  $O(|E| + |V| \log |V|)$  including Dijkstra's algorithm, which is significantly better than the  $O(|N||E| + |V||N|^2 \log |V|)$  complexity of the PFA algorithm [1]. Our algorithm, called RSA/G, is summarized in Table I. Note that we describe a more general version of RSA/G, which allows some Steiner nodes to be marked as permanently *deleted* (discussed in the next section). The algorithm will not perform any Steiner merger at such locations. The default version of RSA/G simply sets  $\text{deleted}[i] = \text{false}$  for all  $i$ .

#### IV. THE RSA/BNB/G ALGORITHM

Recently, Leung and Cong presented an exponential-time branch-and-bound algorithm called RSA/BnB that solves the MRSA problem optimally [22]. They observed that the RSA heuristic is suboptimal precisely because Steiner mergers are greedy and (sometimes) suboptimal. To obtain an optimal solution, they suggested trying out *both* merging and skipping at SMO's. The algorithm, called RSA/BnB, essentially enumerates the entire sequence of choices between *merging* and *skipping* at each SMO, and [22] showed that this method enumerates at least one optimal arborescence.

Like RSA, RSA/BnB can also be generalized to the MSPSA problem. Like RSA/G, RSA/BnB/G visits nodes in decreasing rank order and performs merger if the current node  $v$  is a TMO. If  $v$  is an SMO, however, RSA/BnB/G tries out *both* merging and skipping and returns the better solution.

Unfortunately, the generalization is not as trivial as before. This is because Theorem 3 no longer holds: after an SMO is skipped at  $v_i$  (meaning there exist  $v, v' \in P_{i+1}$  with  $v_i \prec v$  and  $v_i \prec v'$ , but they are not merged at  $v_i$ ),  $|Y_i| \geq |\{v, v'\}| = 2$ .

Given two nodes  $v, v' \in V$ ,  $v'' \in V$  is called a *merging point* (MP) of  $v$  and  $v'$  if and only if  $v'' \preceq v$  and  $v'' \preceq v'$ .

Furthermore,  $v''$  is called a *maximal merging point* (MMP) of  $v$  and  $v'$  if and only if  $v''$  is an MP of  $v$  and  $v'$  and no descendant of  $v''$  is an MP of  $v$  and  $v'$ . Note that any pair of nodes in  $G$  has at least one MP.

*Theorem 4:* Given an arborescence  $A$ , if there exists some Steiner node  $v$  with two or more children and  $v$  is not an MMP of every pair of children of  $v$ , there exists  $A'$ , which has a lower cost than  $A$ .

*Proof:*

Assume the contrary, that  $A$  is optimal but a Steiner node  $v$  with two or more children is not an MMP of some children  $v', v''$ . Then there exists a node  $\tilde{v}$  such that  $v \prec \tilde{v}$  and  $\tilde{v} \preceq v'$  and  $\tilde{v} \preceq v''$ . The new arborescence  $A' = A - \{v \rightsquigarrow v', v \rightsquigarrow v''\} + \{v \rightsquigarrow \tilde{v}, \tilde{v} \rightsquigarrow v', \tilde{v} \rightsquigarrow v''\}$ , with  $|A'| = |A| - |v \rightsquigarrow \tilde{v}| < |A|$ , yields a reduction in total tree length—a contradiction.

Therefore, it suffices to consider Steiner mergers at MMP's only. Let  $Z_i$  be  $Y_i$  if  $|Y_i| = 1$  and  $\emptyset$  otherwise; then we have the following theorem.

*Theorem 5:*  $|Z_i| \leq 1$  for  $1 \leq i \leq |V|$ . □

We can simply use  $X'_i = (\cup_{v_j \in C_i} Z_j) \cap P_{i+1}$  [which also takes  $O(|C_i|)$  time to compute] instead of  $X_i$  in the algorithm. The RSA/BnB/G algorithm is summarized in Table II, and its optimality is proven in Appendix A. An example is shown in Fig. 2. The set of skipped nodes resulting in the lowest tree length is marked as permanently *deleted*, and finally RSA/G() is called (with the set of deleted nodes) to return the arborescence.

#### V. THE RSA/DP/G ALGORITHM

Leung and Cong [23] showed that each subproblem in the recursive call to the RSA/BnB algorithm can be *completely* characterized by a triple  $(P, K, C)$ , which can be defined and solved recursively. As a result, a hashing-based DP technique can be applied to avoid computing any given subproblem more than once. The algorithm, called RSA/DP, is significantly faster than RSA/BnB and capable of solving 250-terminal MRSA

TABLE II  
THE RSA/BnB/G ALGORITHM. (a) TMO. (b) SMO. (c) OTHERWISE

<b>Function</b> RSA/BnB/G/aux( $i, P$ )	
Globals (set by RSA/BnB/G()): $G, N, Z$ , deleted	
	$X \leftarrow (\cup_{v_j \in C_i} Z_j) \cap P$ ;
	<b>if</b> $i = 1$ <b>then</b>
	<b>return</b> $(\emptyset, \sum_{v \in X}  v_i \rightsquigarrow v )$ ;
	<b>else if</b> $v_i \in N$ <b>then</b>
(a)	$Z_i \leftarrow \{v_i\}$ ;
	$(D, C) \leftarrow \text{RSA/BnB/G/aux}(i-1, P - X + \{v_i\})$ ;
	<b>return</b> $(D, C + \sum_{v \in X}  v_i \rightsquigarrow v )$ ;
	<b>else if</b> $ X  > 1$ <b>then</b>
(b)	$Z_i \leftarrow \{v_i\}$ ;
	$(D_m, C_m) \leftarrow \text{RSA/BnB/G/aux}(i-1, P - X + \{v_i\})$ ;
	$C_m \leftarrow C_m + \sum_{v \in X}  v_i \rightsquigarrow v $ ;
	$Z_i \leftarrow \emptyset$ ;
	$(D_s, C_s) \leftarrow \text{RSA/BnB/G/aux}(i-1, P)$ ;
	$D_s \leftarrow D_s \cup \{v_i\}$ ;
	<b>return</b> $ C_m  <  C_s  ? (D_m, C_m) : (D_s, C_s)$ ;
	<b>else</b>
(c)	$Z_i \leftarrow X$ ;
	<b>return</b> RSA/BnB/G/aux( $i-1, P$ );
<b>Function</b> RSA/BnB/G( $G, N, k$ )	
Given an SPDAG $G = (V, E)$ with ranked nodes and a set of terminals $N \in V$	
<b>return</b> the arborescence according to the RSA/BnB/G algorithm.	
	$(D, C) \leftarrow \text{RSA/BnB/G/aux}( V , \emptyset)$ ;
	<b>foreach</b> $v_i \in V$ <b>do</b> deleted[ $i$ ] $\leftarrow (v_i \in D) ? \text{true} : \text{false}$ ;
	<b>return</b> RSA/G( $P, N$ , deleted);

problems optimally in one hour. The reader may refer to [23] for more details.

This result can be generalized to the MSPSA problem, as each subproblem in the recursive call to RSA/BnB/G/aux can also be completely characterized by a triple  $(P, v_i, C)$ , where  $v_i$  is the node to be visited,  $P$  is the current peer set (i.e.,  $P = P_{i+1}$ ), and  $C$  is the cost of the partially constructed arborescence so far. We also call  $i$  the *rank* of the triple. In addition to the characterization, we need to be able to 1) determine the set  $X_i$  (the subset of  $P$  reachable from  $v_i$ ) given an arbitrary triple  $(P, v_i, C)$  and 2) determine whether  $v_i$  is an MMP. To solve 1), we first completely characterize the “ $\prec$ ” relation, which requires  $|V|^2$  bits and  $O(|V|^2 + |V||E|)$  preprocessing time (quite reasonable for an exact algorithm). Let  $W_{i,j} = \{v | v_i \prec v \text{ and } v \in P_j\}$ . Then  $X_i$  is simply  $W_{i,i+1}$ . To solve 2), it suffices to look at each  $W_{j,i+1}$  such that  $v_j \in C_i$ . Then,  $v_i$  is an MMP if and only if none of the  $W_{j,i+1}$  has more than one element.

The algorithm, called RSA/DP/G, is summarized in Table III. Our implementation of RSA/DP/G characterizes each subproblem with a tuple  $(P, v_i, C, S)$ , where  $S$  is the set of nodes at which Steiner mergers occur.<sup>4</sup> RSA/DP/G visits nodes in decreasing rank order in the fashion of RSA/G. If the current node is an SMO, the branching and merging subproblems are characterized as two tuples, which are then

<sup>4</sup>Strictly speaking, only  $P$  and  $i$  are needed to characterize the subproblem to be solved.  $C$  is used for pruning purpose and  $S$  for regenerating the optimal solution once determined.

conditionally inserted into the hash table (denoted “ $\oplus$ ” in the algorithm) to be solved later. To be more precise, given a new tuple  $T = (P, v_i, C, S)$ , it is inserted into the hash table if either 1) a tuple of the form  $T' = (P, v_i, C', S')$  already exists in the hash table, and  $C' > C$  (in such case, the tuple  $T'$  will be replaced by  $T$ ) or 2) no such tuple  $T'$  exists. Note that conditional insertion guarantees that at most one tuple of the form  $(P, v_i, -, -)$  exists in the hash table at any given time.

If the expansion of a tuple  $T$  leads to the creation of a tuple  $T'$ , it is necessary that  $T'$  has a lower rank than  $T$  since nodes are visited in decreasing rank order. By expanding tuples in decreasing rank order, we guarantee that RSA/DP/G will expand at most one tuple of the form  $(P, v_i, -, -)$  for each pair  $(P, v_i)$ .<sup>5</sup> In other words, no subproblem is solved more than once.

The time complexity of the algorithm is dominated by expansion of tuples. Since there are at most  $2^{|N|}$  pairs of the form  $(P, v_i)$  for each  $v_i \in V$ , and each expansion takes  $O(|C_i|)$  time at node  $v_i$ , the overall time complexity is  $O(\sum_{v_i \in V} |C_i| 2^{|N|}) = O(|E| 2^{|N|})$ .

## VI. THE $k$ -IDeA/G ALGORITHM

Since RSA/BnB/G tries out both skipping and merging at every SMO, it requires exponential runtime in the worst case. We now describe a simple heuristic variant of RSA/BnB/G,

<sup>5</sup>This is because no other tuple of the same form exists in the hash table 1) at the time of expansion of the tuple (a property of conditional insertion) and 2) in subsequent execution (all tuples generated later will have a lower rank).

TABLE III  
 THE RSA/DP/G ALGORITHM. (a) TMO. (b) SMO. (c) OTHERWISE

<b>Function RSA/DP/G(<math>G, N</math>)</b>	
Given an SPDAG $G = (V, E)$ with ranked nodes and a set of terminals $N \in V$	
return the arborescence according to the RSA/DP/G algorithm.	
compute the “ $\prec$ ” relation; $H \leftarrow \{(\{v _V\},  V , 0, \emptyset)\}$ ; $i \leftarrow  V $ ; <b>while</b> $i \neq 0$ <b>do</b>	
(*)	<b>find</b> $T = (P, i, C, S) \in H$ such that $i$ is maximized; $H \leftarrow H - \{T\}$ ; $X \leftarrow \emptyset$ ; <b>foreach</b> $v_j \in C_i$ <b>do</b> $W \leftarrow \{v \mid v_j \prec v \text{ and } v \in P\}$ ; <b>if</b> $ W  > 1$ <b>then goto</b> (*); $X \leftarrow X + W$ ; <b>repeat</b> <b>if</b> $v_i \in N$ <b>then</b> (a) $P \leftarrow P - X + \{v_i\}$ ; $C \leftarrow C + \sum_{v \in X}  v_i \rightsquigarrow v $ ; $i \leftarrow i - 1$ ; <b>else if</b> $ X  > 1$ <b>then</b> (b) $H \leftarrow H \oplus \{(P, i - 1, C, S)\}$ ; $H \leftarrow H \oplus \{(P - X + \{v_i\}, i - 1, C + \sum_{v \in X}  v_i \rightsquigarrow v , S \cup \{v_i\})\}$ ; <b>goto</b> (*); <b>else</b> (c) $i \leftarrow i - 1$ ; $(P, i, C, S) \leftarrow$ the only element left in $H$ ; <b>foreach</b> $v_i \in V$ <b>do</b> $\text{deleted}[i] \leftarrow (v_i \in S) ? \text{false} : \text{true}$ ; <b>return</b> RSA/G( $P, N, \text{deleted}$ );

which allows up to  $k$  SMO’s to be skipped along any path in the branch-and-bound diagram. The best set of skipped nodes are is marked as permanently *deleted*, and the algorithm is repeated until there is no further improvement. The heuristic, called  $k$ -IDeA/G (iterated  $k$ -deletion for arborescence), is described in Table IV. At the end of each iteration, the set of  $\leq k$  skipped nodes resulting in the lowest tree length is marked as permanently *deleted* (a deleted node remains deleted throughout, and the  $\leq k$  SMO’s skipped in the current iteration do not include previously deleted nodes). The process is repeated until no further improvement is obtained. Last, RSA/G() is called (with the set of permanently deleted nodes) to return the arborescence.

We can show that the function IDeA/G/aux() (one iteration of the  $k$ -IDeA/G algorithm) has  $O(|E| |N|^k)$  time complexity, where  $k$  is the number of allowed deletions (the complexity analysis is detailed in Appendix B). The experimental result (see Section VIII) shows that in practice,  $k$ -IDeA/G almost always terminates after only a few iterations. Hence, the average-case time complexity of  $k$ -IDeA/G is also  $O(|E| |N|^k)$ . In practice, even the  $(O|E| |N|)$ -time 1-IDeA/G heuristic generates solutions that are essentially optimal and is sufficient for most practical purposes.

## VII. THE $k$ -IA/G ALGORITHM

The IDOM heuristic of Alexander and Robins [1] iteratively finds a node  $v \in V - N$  maximizing  $|\text{MSpA}(G, N, r)| -$

$|\text{MSpA}(G, N \cup \{v\}, r)|$ , where  $|\text{MSpA}(G, N, r)|$  is the length of the minimum spanning arborescence of  $N$  in  $G$  rooted at  $r$ .  $N$  is then replaced by  $N \cup \{v\}$  in the next iteration until no further improvement is possible. The algorithm is a straightforward adaptation of the iterated 1-Steiner approach [18] to the graph arborescence problem, and the time complexity is  $O(|N| |E| + |V| |N|^3)$ .

We now propose a heuristic inspired by the above approach, with a strategy similar to  $k$ -IDeA/G. Recall that  $k$ -IDeA/G can be viewed as a restricted version of the RSA/BnB/G algorithm, in which at most  $k$  Steiner mergers are *skipped*. Our proposed algorithm, called  $k$ -IA/G (which stands for iterated  $k$ -arborescence), is a symmetrical restricted version of RSA/BnB/G in which at most  $k$  Steiner mergers are *allowed*. More precisely,  $k$ -IA/G also visits the nodes in decreasing rank order. If the current node  $v$  is a TMO, the terminal merger is always performed. If  $v$  is an SMO, both merging and skipping are tried unless  $k$  Steiner mergers have already been performed along the path, in which case the SMO is skipped.

Like the RSA/G and the  $k$ -IDeA/G heuristics,  $k$ -IA/G first computes  $X_i$  when node  $v_i$  is visited, then takes appropriate action based on  $X_i$ . With RSA/G and  $k$ -IDeA/G, the bounds on  $|Y_i|$  and  $|Z_i|$ , respectively shown in Theorems 3 and 5, allow  $X_i$  to be computed efficiently in  $O(|C_i|)$  time using  $O(|V|)$  space. Unfortunately, for  $k$ -IA/G, no similar theorem applies. Instead, for each  $v_i \in V$ , let us use  $R_i$  to denote the subset of sinks in  $N$  interested in merging into  $v_i$  if  $v_i$  is a Steiner node.

TABLE IV

THE  $k$ -IDeA/G ALGORITHM. (a) TMO. (b) SMO, NODE DELETED. (c) SMO, SKIPPING ALLOWED. (d) SMO, SKIPPING EXHAUSTED. (e) OTHERWISE

<b>Function IDeA/G/aux(<math>i, P, k</math>)</b>	
Globals (set by IDeA/G()): $G, N, Z, \text{deleted}$	
	$X \leftarrow (\cup_{v_j \in C, Z_j} Z_j) \cap P;$
	<b>if</b> $i = 1$ <b>then</b>
	<b>return</b> $(\emptyset, \sum_{v \in X}  v_i \rightsquigarrow v );$
	<b>else if</b> $v_i \in N$ <b>then</b>
(a)	$Z_i \leftarrow \{v_i\};$
	$(D, C) \leftarrow \text{IDeA/G/aux}(i-1, P-X+\{v_i\}, k);$
	<b>return</b> $(D, C + \sum_{v \in X}  v_i \rightsquigarrow v );$
	<b>else if</b> $ X  > 1$ <b>then</b>
	<b>if</b> $\text{deleted}[i] = \text{true}$ <b>then</b>
(b)	$Z_i \leftarrow \emptyset;$
	<b>return</b> $\text{IDeA/G/aux}(i-1, P, k);$
	<b>else if</b> $k > 0$ <b>then</b>
(c)	$Z_i \leftarrow \{v_i\};$
	$(D_m, C_m) \leftarrow \text{IDeA/G/aux}(i-1, P-X+\{v_i\}, k);$
	$C_m \leftarrow C_m + \sum_{v \in X}  v_i \rightsquigarrow v ;$
	$Z_i \leftarrow \emptyset;$
	$(D_s, C_s) \leftarrow \text{IDeA/G/aux}(i-1, P, k-1);$
	$D_s \leftarrow D_s \cup \{v_i\};$
	<b>return</b> $ C_m  <  C_s  ? (D_m, C_m) : (D_s, C_s);$
	<b>else</b>
(d)	$Z_i \leftarrow \{v_i\};$
	$(D, C) \leftarrow \text{IDeA/G/aux}(i-1, P-X+\{v_i\}, k);$
	<b>return</b> $(D, C + \sum_{v \in X}  v_i \rightsquigarrow v );$
	<b>else</b>
(e)	$Z_i \leftarrow X;$
	<b>return</b> $\text{IDeA/G/aux}(i-1, P, k);$
<b>Function IDeA/G(<math>G, N, k</math>)</b>	
Given an SPDAG $G = (V, E)$ with ranked nodes, a set of terminals $N \in V$ , and the maximum number of nodes $k$ to be deleted, return the arborescence according to the $k$ -IDeA/G algorithm.	
	$C_{best} \leftarrow \infty;$
	<b>foreach</b> $1 \leq i \leq  V $ <b>do</b> $\text{deleted}[i] \leftarrow \text{false};$
	<b>repeat</b>
	$(D, C) \leftarrow \text{IDeA/G/aux}( V , \emptyset, k);$
	<b>if</b> $C < C_{best}$ <b>then</b>
	$C_{best} \leftarrow C;$
	<b>foreach</b> $v_i \in D$ <b>do</b> $\text{deleted}[i] \leftarrow \text{true};$
	<b>else</b>
	<b>return</b> $\text{RSA/G}(P, N, \text{deleted});$

Given a node  $v \in N$ , let  $d_{\min}(v) = \min_{v' \in N, v' \prec v} |v' \rightsquigarrow v|$ . Then,  $R_i = \{v | v \in N, v_i \prec v \text{ and } |v_i \rightsquigarrow v| < d_{\min}(v)\}$ . In other words, a terminal  $v$  is interested in merging into a “downstream” potential Steiner node  $v_i$  (such that  $v_i \prec v$ ) if  $v_i$  is closer to  $v$  than any of  $v$ 's potential parents in  $N$ . The  $d_{\min}$  and  $R_i$  can be computed and maintained in  $O(|E||N|)$  time and  $O(|V||N|)$  space; a given  $X_i$  can then be computed by taking the intersection of  $R_i$  and  $P_{i+1}$ , which requires  $O(|P|)$  time.

The complete  $k$ -IA/G algorithm is described in Table V.  $k$ -IA/G calls the function IA/G/aux() to find the best (maximum reduction in tree length) set of  $\leq k$  Steiner nodes, and adds them to the terminal set  $N$ . When  $k = 0$ , the function IA/G/0()

is called instead of IA/G/aux(); this function simply computes the sum of the distances between each remaining terminal or Steiner node and the closest “downstream” terminal. Note that IA/G/0( $i, P$ ) can be implemented to run in  $O(d)$  time [we consider all the remaining sinks to be *deleted* after returning from IA/G/0()]. IA/G() calls IA/G/aux() repeatedly until no further reduction in tree length is obtained. Last, RSA/G() is called to return the arborescence; at this point,  $N$  includes all the Steiner nodes.

We can show that the IA/G/aux() function (one iteration of the  $k$ -IA/G algorithm) has  $O(|V|^k|N|)$  time complexity, where  $k$  is the number of allowed Steiner mergers (the complexity analysis is detailed in Appendix C). As a result,

TABLE V

THE  $k$ -IA/G ALGORITHM. (a) TMO. (b) SMO, MERGING ALLOWED. (c) SMO, MERGING EXHAUSTED. (d) OTHERWISE

<b>Function IA/G/O(<math>i, P</math>)</b>	
Globals (set by IA/G()): $G, N, d_{min}$	
$C \leftarrow 0$ ;	
<b>foreach</b> $v \in P$ <b>do</b> $C \leftarrow C + d_{min}(v)$ ;	
<b>foreach</b> $v_j \in N, 1 < j \leq i$ <b>do</b> $C \leftarrow C + d_{min}(v_j)$ ;	
<b>return</b> $(\emptyset, C)$ ;	
<b>Function IA/G/aux(<math>i, P, k</math>)</b>	
Globals (set by IA/G()): $G, N, R$	
$X \leftarrow R_i \cap P$ ;	
<b>if</b> $k = 0$ <b>then</b>	
<b>return</b> IA/G/O( $i, P$ );	
<b>else if</b> $i = 1$ <b>then</b>	
<b>return</b> $(\emptyset, \sum_{v \in X}  v_i \rightsquigarrow v )$ ;	
<b>else if</b> $v_i \in N$ <b>then</b>	
(a)	$(S, C) \leftarrow$ IA/G/aux( $i - 1, P - X + \{v_i\}, k$ );
	<b>return</b> $(S, C + \sum_{v \in X}  v_i \rightsquigarrow v )$ ;
<b>else if</b> $ k > 0 $ <b>then</b>	
(b)	$(S_m, C_m) \leftarrow$ IA/G/aux( $i - 1, P - X + \{v_i\}, k - 1$ );
	$(S_m, C_m) \leftarrow (S_m \cup \{v_i\}, C_m + \sum_{v \in X}  v_i \rightsquigarrow v )$ ;
	$(S_s, C_s) \leftarrow$ IA/G/aux( $i - 1, P, k$ );
	<b>return</b> $ C_m  <  C_s  ? (S_m, C_m) : (S_s, C_s)$ ;
<b>else</b>	
(c), (d)	<b>return</b> IA/G/aux( $i - 1, P, k$ );
<b>Function IA/G(<math>G, N, k</math>)</b>	
Given an SPDAG $G = (V, E)$ with ranked nodes, a set of terminals $N \in V$ , a root $r \in N$ , and the maximum number of Steiner merger $k$ , return the arborescence according to the $k$ -IA/G algorithm (with the side effect that $N$ also contains the Steiner nodes at the end).	
<b>compute</b> $R, d_{min}$ ;	
$C_{best} \leftarrow \infty$ ;	
<b>repeat</b>	
$(S, C) \leftarrow$ IA/G/aux( $ V , \{v_{ N }\}, k$ );	
<b>if</b> $C < C_{best}$ <b>then</b>	
$C_{best} \leftarrow C$ ;	
<b>foreach</b> $v \in S$ <b>do</b> $N \leftarrow N \cup \{v\}$ ;	
<b>update</b> $R, d_{min}$ ;	
<b>else</b>	
<b>foreach</b> $v_i \in V$ <b>do</b> $deleted[i] \leftarrow (v_i \in N) ? false : true$ ;	
<b>return</b> RSA/G( $G, N, deleted$ );	

the overall complexity of the  $k$ -IA/G algorithm is  $O(|E||N| + i|V|^k|N|)$ , where  $i$  is the number of iterations. The extra  $O(|E||N|)$  complexity is due to the one-time computation of  $d_{min}$  and  $R$  and the subsequent updates. Since  $i = O(|N|)$  in the worst case [the average case is also  $O(|N|)$ , as shown in the next section], we have an overall time complexity of  $O(|E||N| + |V|^k|N|^2)$ . This compares favorably with the IDOM algorithm of Alexander and Robins, which has a complexity of  $O(|E||V| + |V||N|^3)$ .

## VIII. EXPERIMENTAL RESULTS

### A. Comparison I

We implemented all algorithms and heuristics proposed in this paper using GNU C++ in the SUN UNIX environ-

ment and compared against the PFA and IDOM algorithms of Alexander and Robins, which were proven to be highly effectively for FPGA routing [1]. All experiments were performed on a SPARC-5, and all central processing unit (CPU) times are for this machine. We performed experiments in the style of [1], whose goal was to compare the runtime and solution quality of different Steiner and arborescence algorithms on a typical FPGA routing instance with various levels of congestion. Routing was done on a  $20 \times 20$  grid graph, wherein edge weights model the congestion induced by previously routed nets. Three different levels of congestion were modeled: a) no congestion (no prerouted nets), b) low congestion (ten prerouted nets), and c) medium congestion (20 prerouted nets); see [1] for more details. For each net

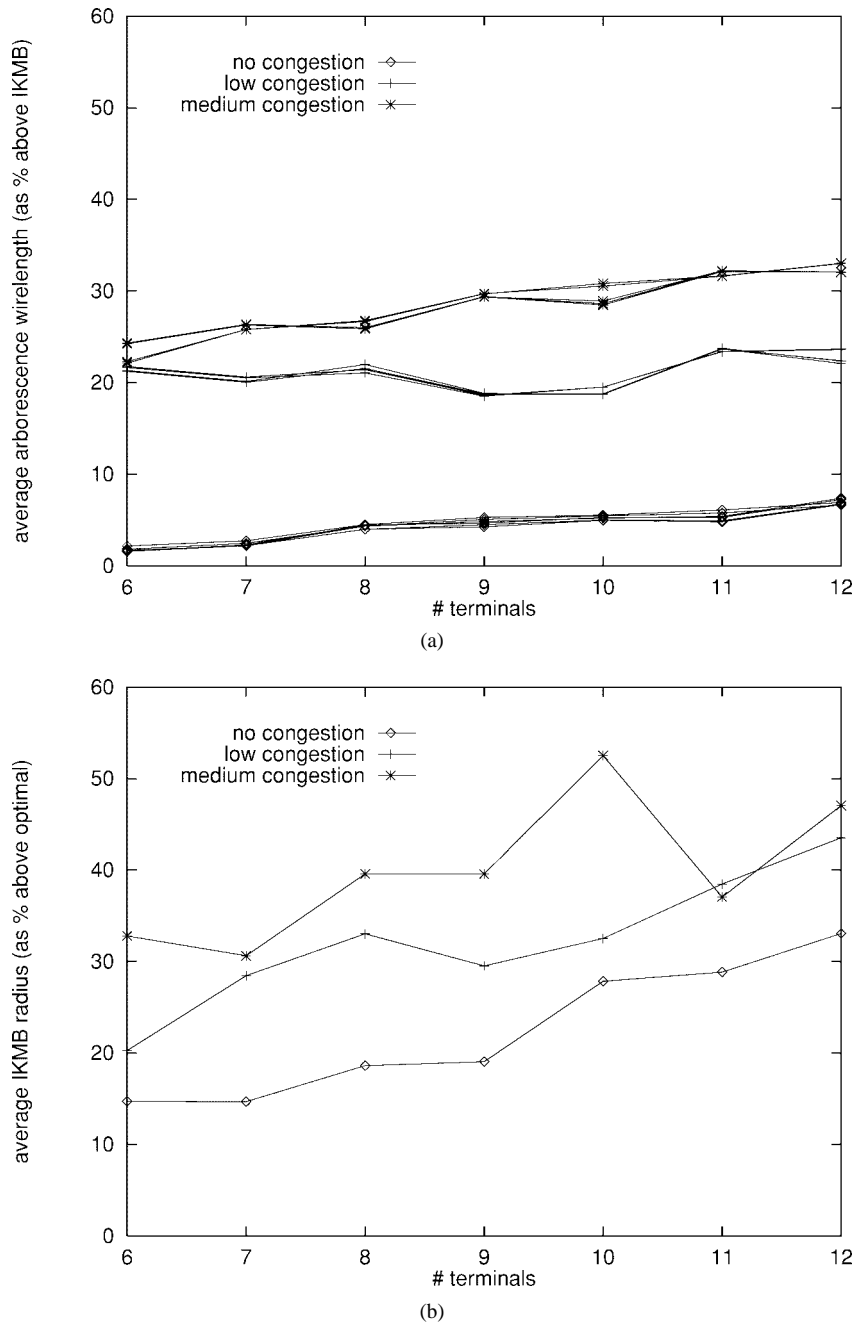


Fig. 3. Comparison I. (a) The average wire length of various arborescence algorithms (PFA, IDOM, RSA/G, 1-IDeA/G, 1-IA/G, and RSA/BnB/G) as a percentage above the IKMB wire length under the conditions of 1) no congestion, 2) low congestion, and 3) medium congestion. (b) The average radius (maximum source-to-sink path length) of IKMB-constructed Steiner as a percentage above optimal.

size (6–12), 50 random nets were generated and routed on the weighted graph that modeled the given congestion (congestion was newly generated for each net). We compared the IKMB Steiner algorithm (one of the best performing graph Steiner algorithms in the literature) with several arborescence algorithms, including PFA and IDOM from [1], our optimal algorithms RSA/BnB/G and RSA/DP/G, and our heuristics RSA/G, 1-IDeA/G, and 1-IA/G. For each net, we normalized the tree length produced by each heuristic to that of IKMB, and the maximum source-to-sink path length of each heuristic was normalized to optimal.

Fig. 3(a) gives the average tree length of various arborescence algorithms (as percentage above that of IKMB) under var-

ious congestion levels, and Fig. 3(b) gives the average radius (maximum source-to-sink path length) of IKMB-constructed Steiner as a percentage above the maximum Manhattan source-to-sink distance. When there is little or no congestion, arborescences and Steiner trees have very similar total tree length. As the congestion level increases, however, arborescences tend to have longer tree length but shorter radius when compared to Steiner topologies. All of the six arborescence heuristics we tested (PFA, IDOM, RSA/G, 1-IDeA/G, and 1-IA/G) gave similar solution quality (arborescences generated are less than 0.5% suboptimal on average),<sup>6</sup> and this is the reason why we

<sup>6</sup>Please refer to [8] for a detailed comparison.

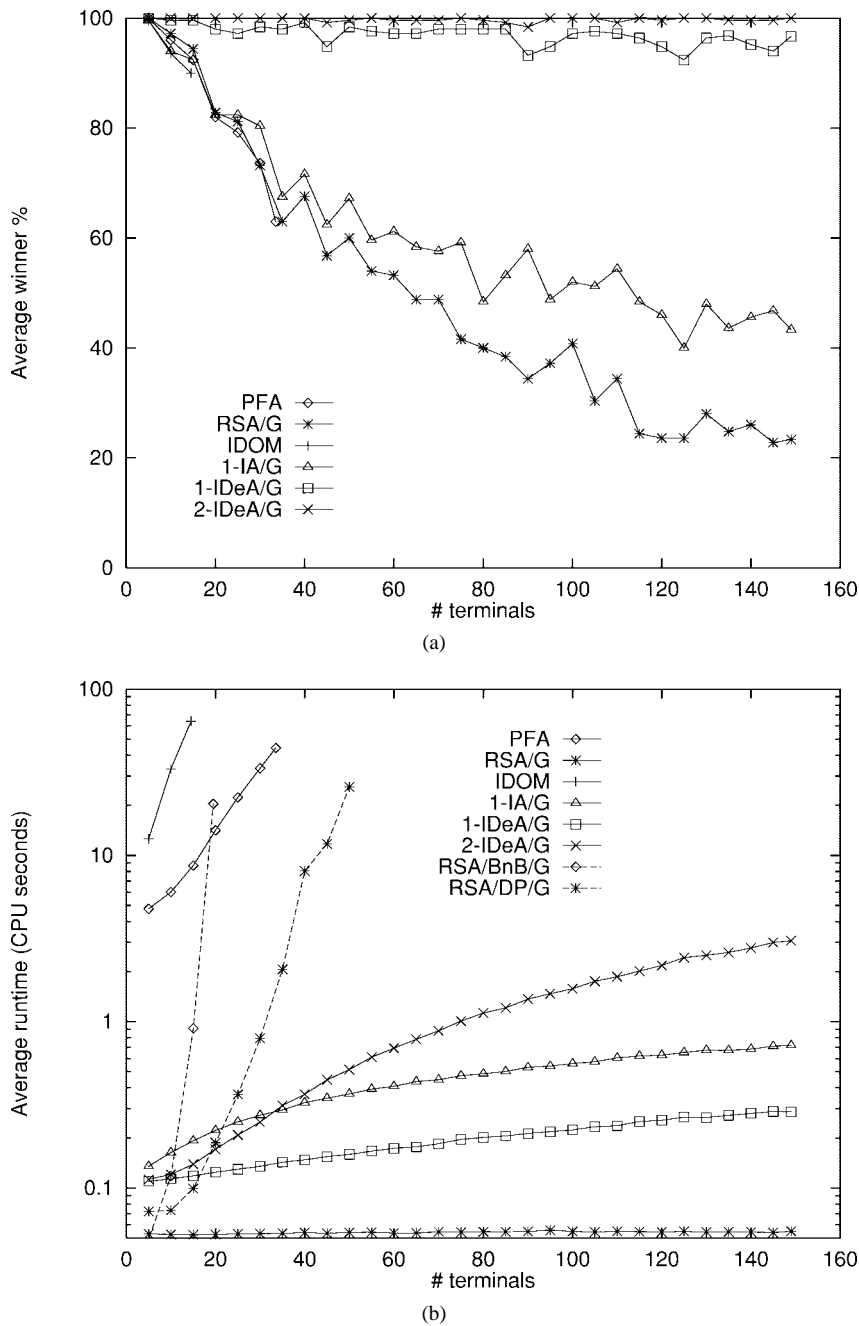


Fig. 4. Comparison II. (a) The percentage of trials when each heuristic is a winner. (b) The average runtime in CPU seconds.

did not distinguish the tree lengths among different algorithms in Fig. 3(a). However, their runtimes differ drastically despite such similarity in performance, which we will study in the next subsection.

### B. Comparison II

We also “stress tested” our algorithms and heuristics by running them on a grid that is four times larger ( $40 \times 40$ ), with a medium congestion level (20 prerouted nets). The size of the nets tested ranges from three to 150, and for each net size, 50 random nets were generated and routed by PFA, IDOM, RSA/BnB/G and RSA/DP/G, RSA/G, 1-IA/G, 1-IDeA/G, and 2-IDeA/G. This comparison highlights runtime and solution

quality when the problem size is large (note that the data for PFA, IDOM, RSA/BnB/G, and RSA/DP/G were incomplete because they exceeded the run-time limit of 20 s for large designs).

For a given routing instance, a heuristic is called a *winner* if it generates a solution with the lowest tree length among all heuristics tested (note that RSA/BnB/G and RSA/DP/G are not included). Fig. 4(a) shows the percentage of trials when each heuristic is a winner; 1-IDeA/G and 2-IDeA/G are consistently as good as or better than the other heuristics. Runtimes are shown in Fig. 4(b). Average CPU times for both 1-IDeA/G and 1-IA/G were less than one second and for 2-IDeA/G were less than four seconds, even for the largest test cases. Moreover, our heuristics are orders of magnitude faster

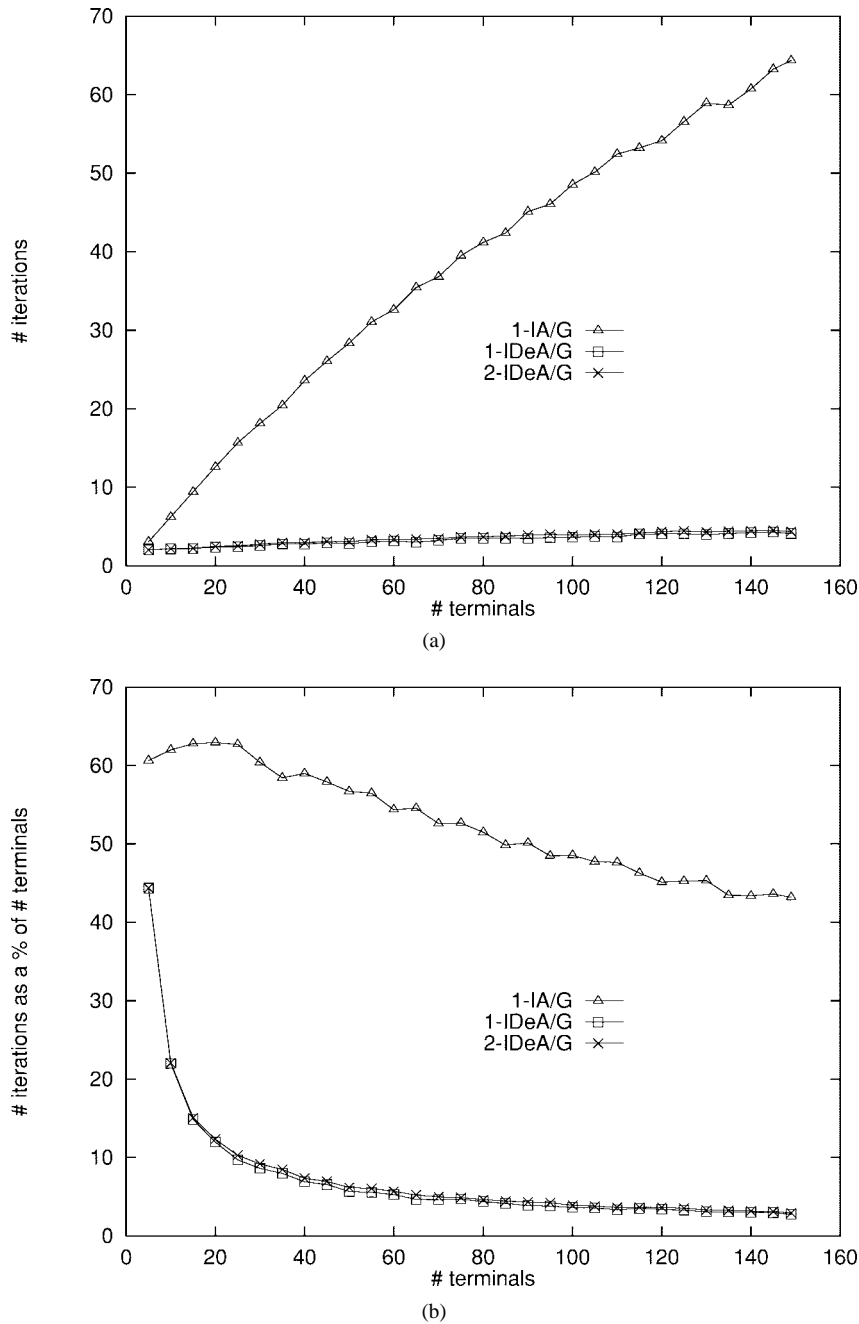


Fig. 5. Comparison II. (a) The average number of iterations for 1-IDeA/G, 2-IDeA/G, and 1-IA/G. (b) The average as percentage of the number of terminals.

than PFA and IDOM, even on instances of modest size [for example, on 15-sink instances, 1-IDeA/G averages 53X (291X) faster than PFA (IDOM)], a result consistent with the earlier comparison between the time complexities. Thus, substantial run-time improvement over existing PFA- and IDOM-based FPGA routing algorithms is expected with our new heuristics.

We also observe that 1-IDeA/G is superior to 1-IA/G in *both* quality and runtime. Fig. 5 shows that on average, 1-IDeA/G requires significantly fewer iterations than 1-IA/G; 1-IDeA/G finished in six iterations or less (practically constant) on all our test cases, while 1-IA/G requires a nearly linear number of iterations. This is not surprising since the number of iterations of 1-IA/G is one plus the number of (degree

three or higher) Steiner nodes in the arborescence, which is a linear or near linear function of  $|N|$ . Hence, the effective run-time complexities of 1-IDeA/G and 1-IA/G are  $O(|E||N|)$  and  $O(|E||N| + |V||N|^2)$ , respectively.

From these experiments, we conclude that RSA/G and 1-IDeA/G are the two best arborescence algorithms to use in terms of runtime and solution quality.

### C. Comparison III

Last, we also studied graph-based routing in a regime that models the presence of obstacles. In a layout region of size  $4000 \times 4000$ , we randomly generate a set of  $n$  terminals  $N$  and a set of  $2n$  rectangles  $R$  (length and width are both within

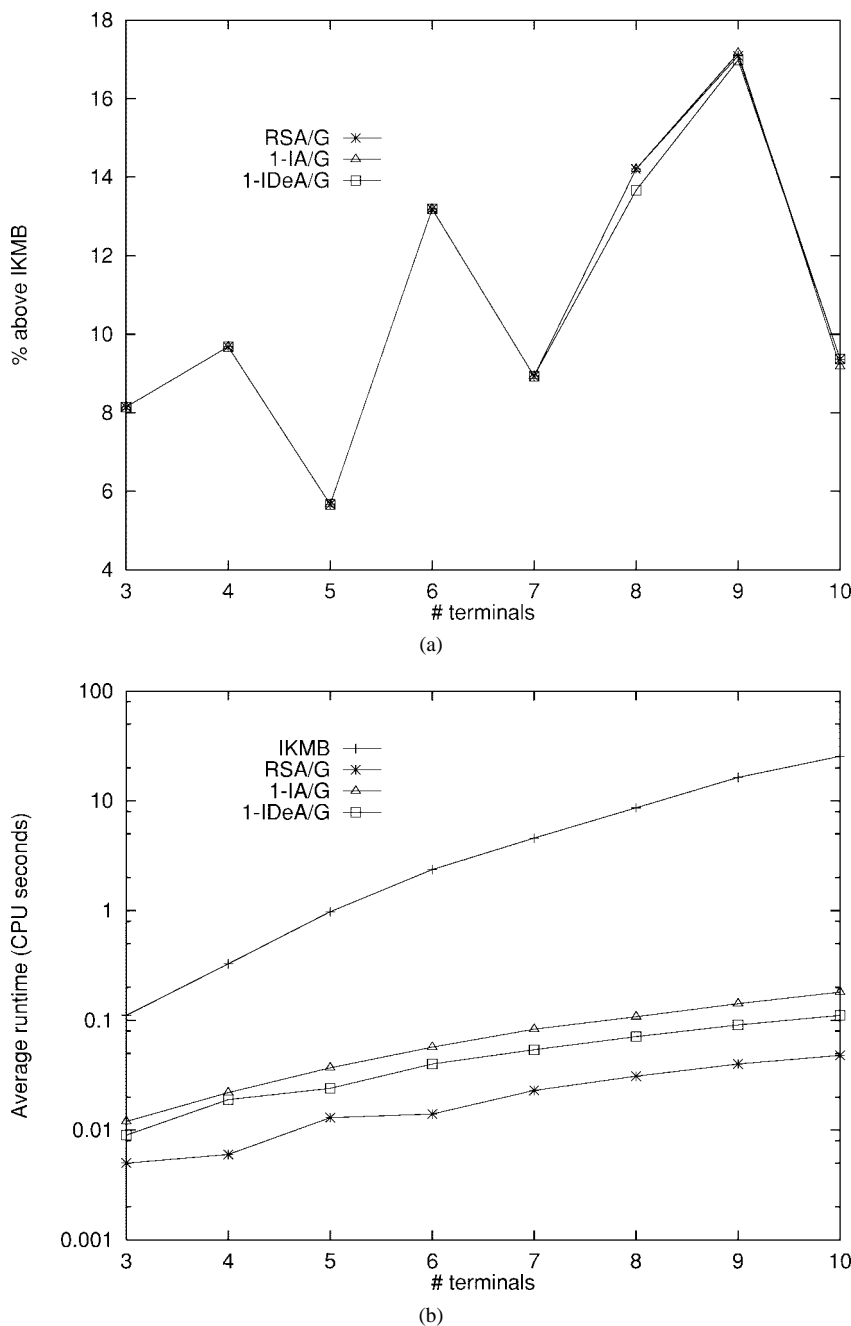


Fig. 6. Comparison III. (a) Average tree length (as percentage above that of IKMB). (b) Average runtime in CPU seconds.

[400, 600]). We then construct the Hanan grid graph  $G_{N,R}$  induced by the points and the corners of the rectangles, then construct a new graph  $G$  by deleting any edges of  $G_{H,R}$  that lie within rectangles in  $R$ .<sup>7</sup> For each  $n$ ,  $3 \leq n \leq 10$ , ten random examples with all terminals reachable from each other were generated and routed using IKMB, RSA/G, 1-IDeA/G, and 1-IA/G. Fig. 6 shows the average tree length as a percentage above that of IKMB, along with the runtime (in CPU seconds) for each of the four heuristics (again, the solution quality

of the heuristics is very similar). The arborescences are on average 6–17% longer than the Steiner trees constructed by IKMB but have much smaller maximum source-to-sink path lengths; runtimes are orders of magnitude smaller. Last, Fig. 7 shows a 30-terminal, 30-rectangle example and the solution generated by 1-IDeA/G in 0.49 CPU seconds.

## IX. CONCLUSION

We have presented several efficient heuristics and exact algorithms for the MSPSA problem, improving upon previous work in both runtime and solution quality. We have also presented detailed complexity analysis as well as extensive

<sup>7</sup>The graph  $G$  has been proven to contain pair-wise shortest paths between all terminals [7] and to contain an optimal rectilinear Steiner tree [6]. The question of whether  $G$  necessarily contains an MRSA is still open, though the answer is likely positive.

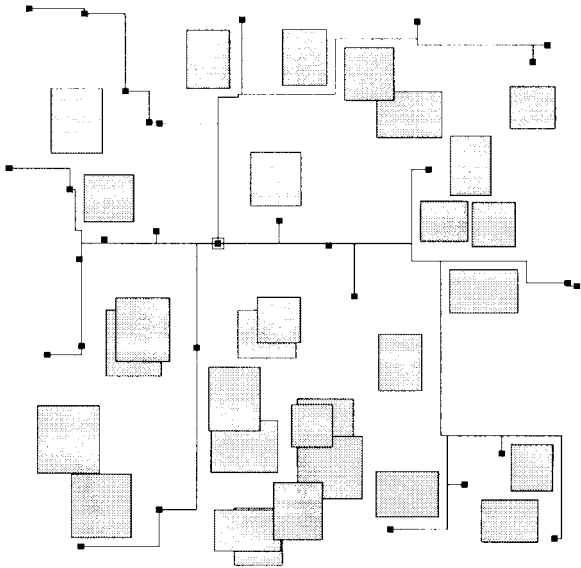


Fig. 7. A 30-terminal, 30-rectangle example, and the 1-IDeA/G solution.

experimental results that suggest that our algorithms are more effective in practice than other arborescence algorithms. We believe that applications to performance-driven global routing, FPGA routing, and non-VLSI domains such as multicast routing are all promising.

#### APPENDIX A OPTIMALITY OF RSA/BNB/G

We shall prove the optimality of RSA/BNB/G in the fashion of [22]. Let  $B$  denote a generic node in the BNB diagram and  $v_B, i_B, \mathcal{A}_B$  be the node to be visited, the rank of the node, and the partial arborescence constructed immediately *after* visiting  $v_B$ , respectively (note that  $v_B = v_{i_B}$  and  $\mathcal{A}_B = \mathcal{A}_{i_B-1}$ ). If  $v_B$  is a TMO,  $B_T$  denotes the child node of  $B$  in the BNB diagram (note that  $i_{B_T} = i_B - 1$ ). If  $v_B$  is an SMO,  $B_M$  and  $B_S$  denote the two child nodes of  $B$  corresponding to merging and skipping, respectively (note that  $i_{B_S} = i_{B_T} = i_B - 1$ ). We say that  $B$  is *optimal* if and only if there exists an optimal arborescence  $\mathcal{A}_B^*$  that satisfies the following two optimality criteria:

- [OC1( $B$ )]  $\mathcal{A}_B \subseteq \mathcal{A}_B^*$ ;
- [OC2( $B$ )]  $\nexists i$  such that  $i \geq i_B$  and  $v_i \rightsquigarrow v_j \in \mathcal{A}_B^* - \mathcal{A}_B$ .

These two criteria guarantee that 1) the current partial arborescence is optimal and 2) it is possible to generate an optimal arborescence even though only nodes with a lower rank than  $i_B$  will be visited in the remaining execution.

*Lemma 1:* If  $B$  is optimal and  $v_B$  is a TMO,  $B_T$  is optimal and  $\mathcal{A}_{B_T}^*$  satisfies both OC1( $B_T$ ) and OC2( $B_T$ ).

*Proof:* First of all, we shall show that  $\mathcal{A}_{B_T} = \mathcal{A}_B + \{v_{B_T} \rightsquigarrow v \mid v \in X_{i_{B_T}}\} \subseteq \mathcal{A}_B^*$ . Assume the contrary—that this is not the case. Then there must exist  $v_i \rightsquigarrow v \in \mathcal{A}_B^*$  such that  $v \in X_{i_{B_T}}$  and  $i < i_{B_T}$ . We can construct an arborescence  $\mathcal{A}'_B = \mathcal{A}_B^* - \{v_i \rightsquigarrow v\} + \{v_B \rightsquigarrow v\}$ , and we have  $|\mathcal{A}'_B| = |\mathcal{A}_B^*| + \Delta(v_i) - \Delta(v_B) < |\mathcal{A}_B^*|$ , contradicting

the assumption that  $\mathcal{A}_B^*$  is optimal. Therefore,  $\mathcal{A}_{B_T} \subseteq \mathcal{A}_B^*$ , and  $\mathcal{A}_B^*$  satisfies OC1( $B_T$ ).

Second, we shall show that  $\nexists v_i \rightsquigarrow v_j \in \mathcal{A}_B^* - \mathcal{A}_{B_T}$  such that  $i \geq i_{B_T}$ . Assume the contrary—that such  $v_i \rightsquigarrow v_j$  exists. Note that the optimality of  $\mathcal{A}_B^*$  implies that  $i < i_B$ . Therefore,  $i_{B_T} \leq i < i_B \Rightarrow i_{B_T} \leq i < i_{B_T} + 1 \Rightarrow i = i_{B_T} \Rightarrow v_i = v_{B_T}$ . This is impossible, however, since no nodes in the peer set dominate  $v_{B_T}$  after the terminal merger at  $v_{B_T}$ . As a result, no such path  $v_i \rightsquigarrow v_j$  exists, and  $\mathcal{A}_B^*$  satisfies OC2( $B_T$ ).  $\square$

*Lemma 2:* If  $B$  is optimal and  $v_B$  is a Steiner merging point, either 1)  $B_M$  is optimal and  $\mathcal{A}_B^*$  satisfies both OC1( $B_M$ ) and OC2( $B_M$ ) or 2)  $B_S$  is optimal and  $\mathcal{A}_B^*$  satisfies both OC1( $B_S$ ) and OC2( $B_S$ ).

*Proof:* If  $v_B \in \mathcal{A}_B^*$ , then using an argument similar to the previous proof, we can prove that  $\mathcal{A}_B^*$  satisfies both OC1( $B_T$ ) and OC2( $B_T$ ), and so  $B_T$  is optimal.

If  $v_B \notin \mathcal{A}_B^*$ ,  $\mathcal{A}_B^*$  satisfies OC1( $B_S$ ) since  $\mathcal{A}_{B_S} = \mathcal{A}_B \subseteq \mathcal{A}_B^*$ . To show that  $\mathcal{A}_B^*$  satisfies OC2( $B_S$ ), we assume the contrary that  $\exists v_i \rightsquigarrow v_j \in \mathcal{A}_B^* - \mathcal{A}_{B_S}$  such that  $i \geq i_{B_S}$ . Using the same argument as before, we have  $i_{B_S} \leq i < i_B \Rightarrow v_i = v_{B_S}$ . This is contradictory, however, since  $v_B \notin \mathcal{A}_B^*$ .  $\square$

*Theorem 6:* There exists at least one leaf node in the BNB diagram in the RSA/BNB/G algorithm that is optimal in tree length.

*Proof:* It follows from the facts that the root node of the BNB diagram is optimal ( $P_{|V|+1} = \emptyset$  and  $\mathcal{A}_{|V|+1} = \emptyset$ ) and that each optimal node has at least one child node that is optimal.  $\square$

#### APPENDIX B COMPLEXITY OF $k$ -IDEA/G

Consider the recursive function  $\text{IDeA/G/aux}()$ , which does the majority of the work and whose time complexity is a function of the triple  $(i, d, k)$ , where  $i$  is the rank of the current node,  $d$  is the number of nodes removed from the peer set in the subsequent execution (recursion), and  $k$  is the number of SMO's that can be skipped in the subsequent execution. Let  $f_{G,N}(i, d, k)$  denote its time complexity. The execution of  $\text{IDeA/G/aux}()$ , excluding the recursion, is dominated by the computation of  $X_i$ , which takes  $O(|C_i|)$  time. In the following, we simply say that it takes  $C_i$  time without loss of precision. Table VI gives the recursive definition of  $f_{G,N}(i, d, k)$  according to the different possible scenarios for  $i \geq 1, d \geq 0$ , and  $k \geq 0$ . The base case of the algorithm is  $f_{G,N}(1, d, k) = |C_1|$ . Note that all of these complexities are directly inferred from the algorithm. The following theorem bounds the complexity of  $f_{G,N}(i, d, k)$ .

*Theorem 7:* For any  $i \geq 1, d \geq 0$ , and  $k \geq 0$ ,  $f_{G,N}(i, d, k) \leq \sigma_i(d + 2/2)^k$ , where  $\sigma_i = \sum_{1 \leq j \leq i} |C_j|$ .

*Proof:* We use induction on  $i$ . For  $i = 1$ ,  $f_{G,N}(i, d, k) = |C_1| \leq |C_1|[(d+2)/2]^k$  for any  $d \geq 0, k \geq 0$ . Assume that  $f_{G,N}(i, d, k) \leq \sigma_i[(d+2)/2]^k$  for  $i = m-1 \geq 1$ ; we shall prove that  $f_{G,N}(m, d, k) \leq \sigma_m[(d+2)/2]^k$  holds for all of the scenarios described in Table VI. Note that it suffices to prove the result for scenarios b) and c), since the proofs for a), d), and e) are subsumed by that for b).

TABLE VI  
THE COMPLEXITY OF THE IDeA/G/aux FUNCTION FOR ANY  $i \geq 1$ ,  $d \geq 0$ , AND  $k \geq 0$  (“—” DENOTES DON’T CARE)

	Description	$v_i \in N$ ?	deleted[?]	$ X_i  > 1$ ?	$k > 0$ ?
(a)	TMO	true	--	--	--
(b)	SMO, NODE DELETED	false	true	--	--
(c)	SMO, SKIPPING ALLOWED	false	false	true	true
(d)	SMO, SKIPPING EXHAUSTED	false	false	true	false
(e)	OTHERWISE	false	false	false	--

	Description	$f_{G,N}(i, d, k) =$
(a)	TMO	$ C_i  + f_{G,N}(i-1, d- X , k)$
(b)	SMO, NODE DELETED	$ C_i  + f_{G,N}(i-1, d, k)$
(c)	SMO, SKIPPING ALLOWED	$ C_i  + f_{G,N}(i-1, d- X , k) + f_{G,N}(i-1, d, k-1)$
(d)	SMO, SKIPPING EXHAUSTED	$ C_i  + f_{G,N}(i-1, d- X , k)$
(e)	OTHERWISE	$ C_i  + f_{G,N}(i-1, d, k)$

In case b), we have

$$\begin{aligned}
 f_{G_T}(m, d, k) &= |C_m| + f_{G,N}(m-1, d, k) \\
 &\leq |C_m| + \sigma_{m-1} \left( \frac{d+2}{2} \right)^k \\
 &\leq (|C_m| + \sigma_{m-1}) \left( \frac{d+2}{2} \right)^k \\
 &= \sigma_m \left( \frac{d+2}{2} \right)^k.
 \end{aligned}$$

In case c), we have

$$\begin{aligned}
 f_{G,N}(m, d, k) &= |C_m| + f_{G,N}(m-1, d-|X|, k) \\
 &\quad + f_{G,N}(m-1, d, k-1) \\
 &\leq |C_m| + \sigma_{m-1} \left( \frac{d-|X|+2}{2} \right)^k \\
 &\quad + \sigma_{m-1} \left( \frac{d+2}{2} \right)^{k-1} \\
 &\leq |C_m| + \sigma_{m-1} \left( \frac{d-2+2}{2} \right)^k \\
 &\quad + \sigma_{m-1} \left( \frac{d+2}{2} \right)^{k-1} \\
 &\leq |C_m| + \sigma_{m-1} \left( \frac{d}{2} \right) \left( \frac{d+2}{2} \right)^{k-1} \\
 &\quad + \sigma_{m-1} \left( \frac{d+2}{2} \right)^{k-1} \\
 &= |C_m| + \sigma_{m-1} \left( \frac{d}{2} + 1 \right) \left( \frac{d+2}{2} \right)^{k-1} \\
 &= |C_m| + \sigma_{m-1} \left( \frac{d+2}{2} \right)^k \\
 &\leq (|C_m| + \sigma_{m-1}) \left( \frac{d+2}{2} \right)^k \\
 &= \sigma_m \left( \frac{d+2}{2} \right)^k.
 \end{aligned}$$

Therefore, the induction step holds for  $i = m$  for each of the scenarios a)–e).  $\square$

*Theorem 8:* The IDeA/G/aux() function (one iteration of the  $k$ -IDeA/G algorithm) has complexity  $O(|E| |N|^k)$ , where  $k$  is the number of allowed deletions.

*Proof:* Note that any arborescence has at most  $|N| - 1$  Steiner nodes, and therefore, at most  $|N| + |N| - 1 - 1 = 2|N| - 2$  nodes are removed from the peer set (only  $r$  remains in  $P$  at the end). Therefore, the complexity of the function is at most  $f_{G,N}(|V|, 2|N| - 2, k) \leq \sigma_{|V|} \{[(2|N| - 2) + 2]/2\}^k = O(|E| |N|^k)$ .  $\square$

#### APPENDIX C COMPLEXITY OF $k$ -IA/G

We use an analysis scheme similar to that presented for  $k$ -IDeA/G. The complexity of the function IA/G/aux() can be expressed as a function of the triple  $(i, d, k)$ , where  $i$  is the rank of the current node,  $d$  is the number of nodes removed from the peer set in the subsequent execution (recursion), and  $k$  is the number of Steiner mergers allowed in the subsequent execution. In what follows, let  $g_{G,N}(i, d, k)$  be the complexity of calling IA/G/aux(). The time complexity of executing IA/G/aux() at node  $v_i$ , excluding the recursive calls, is  $O(|P_{i+1}|)$ . However, we know that  $|P_{i+1}| \leq d + 1$  since all nodes in the peer set (except  $r$ , which is added to the peer set at the end) will have been deleted when the recursion terminates. As before, we simply say that IA/G/aux(), excluding the recursive calls, takes  $d + 1$  time. Table VII gives the (recursive) definitions of  $g_{G,N}(i, d, k)$  according to the different possible scenarios, for  $i \geq 1$ ,  $d \geq 1$ , and  $k \geq 0$ . The base cases of the algorithm are  $g_{G,N}(1, d, k) = d + 1$  and  $g_{G,N}(i, d, 0) = d + 1$ . The following theorem bounds the complexity of  $g_{G,N}(i, d, k)$ .

*Theorem 9:* For any  $i \geq 1$ ,  $d \geq 0$ , and  $k \geq 0$ ,  $g_{G,N}(i, d, k) \leq i^k(2d + 1)$ .

*Proof:* We use induction on  $i$ . Note that it suffices to prove the result for scenarios a), b), and c), since d) is subsumed by c). The theorem holds for  $i = 1$  since  $g_{G,N}(1, d, k) = d + 1 \leq i^k(2d + 1)$  for any  $d \geq 0, k \geq 0$ . It also holds for  $k = 0$  since  $g_{G,N}(i, d, 0) = d + 1 \leq i^k(2d + 1)$  for any  $i \geq 1, d \geq 0$ . Assume that  $g_{G,N}(i, d, k) \leq i^k(2d + 1)$  for any  $i, d$ , and  $k$  with  $1 \leq i < m$  ( $d \geq 0, k \geq 1$ ).

In case a), we have

$$\begin{aligned}
 g_{G,N}(m, d, k) &= (d + 1) + g_{G,N}(m-1, d-|X|, k) \\
 &\leq (d + 1) + (m-1)^k [2(d-|X|) + 1] \\
 &\leq (2d + 1) + (m-1)^k(2d + 1) \\
 &= [1 + (m-1)^k](2d + 1) \leq m^k(2d + 1).
 \end{aligned}$$

TABLE VII  
TIME COMPLEXITY OF THE IA/G/AUX FUNCTION FOR ANY  $i \geq 1$ ,  $d \geq 1$ , AND  $k \geq 0$

	Description	$v_i \in N?$	$ X_i  > 1?$	$k > 0?$
(a)	TMO	true	---	---
(b)	SMO, MERGING ALLOWED	false	true	true
(c)	SMO, MERGING EXHAUSTED	false	true	false
(d)	OTHERWISE	false	false	---

	Description	$g_{G,N}(i, d, k) =$
(a)	TMO	$(d+1) + g_{G,N}(i-1, d- X , k)$
(b)	SMO, MERGING ALLOWED	$(d+1) + g_{G,N}(i-1, d- X , k-1) + g_{G,N}(i-1, d, k)$
(c)	SMO, MERGING EXHAUSTED	$(d+1) + g_{G,N}(i-1, d, k)$
(d)	OTHERWISE	$(d+1) + g_{G,N}(i-1, d, k)$

In case b) we have, if  $k > 1$

$$\begin{aligned}
g_{G,N}(m, d, k) &= (d+1) + g_{G,N}(m-1, d-|X|, k-1) \\
&\quad + g_{G,N}(m-1, d, k) \\
&\leq (d+1) + (m-1)^{k-1}[2(d-|X|) + 1] \\
&\quad + (m-1)^k(2d+1) \\
&\leq (d+1) + (m-1)^{k-1}(2d-4+1) \\
&\quad + (m-1)^k(2d+1) \\
&\leq (m-1)^{k-1}[d+1+2d-3 \\
&\quad + (m-1)(2d+1)] \\
&\leq (m-1)^{k-1}(m+1)(2d+1) \\
&= (m-1)^{k-2}(m-1)(m+1)(2d+1) \\
&\leq (m-1)^{k-2}(m^2)(2d+1) \leq m^k(2d+1).
\end{aligned}$$

If  $k = 1$  instead, then

$$\begin{aligned}
g_{G,N}(m, d, k) &= (d+1) + g_{G,N}(m-1, d-|X|, k-1) \\
&\quad + g_{G,N}(m-1, d, k) \\
&\leq (d+1) + (d-|X|) + 1 \\
&\quad + (m-1)(2d+1) \\
&\leq (d+1) + (d-2) + 1 + (m-1)(2d+1) \\
&= 2md + m - 1 < 2md + m = m(2d+1) \\
&= m^k(2d+1).
\end{aligned}$$

In case c), we have

$$\begin{aligned}
g_{G,N}(m, d, k) &= (d+1) + g_{G,N}(m-1, d, k) \\
&\leq (2d+1) + (m-1)^k(2d+1) \\
&\leq [1 + (m-1)^k](2d+1) \leq m^k(2d+1).
\end{aligned}$$

Therefore, the induction step holds for  $i = m$  for each of the scenarios a)–d).  $\square$

*Theorem 10:* The IA/G/aux() function (one iteration of the  $k$ -IA/G algorithm) has complexity  $O(|V|^k|N|)$ , where  $k$  is the number of allowed Steiner mergers.

*Proof:* Since there are at most  $2|N| - 1$  nodes removed from the peer set (all terminals and Steiner nodes), the complexity of the algorithm is equal to  $g_{G,N}(|V|, 2|N| - 1 + 1, k) = |V|^k[2(2|N|) + 1] = O(|V|^k|N|)$ .  $\square$

## REFERENCES

- [1] M. J. Alexander and G. Robins, "New performance-driven FPGA routing algorithms," *IEEE Trans. Computer-Aided Design*, vol. 15, pp. 1505–1517, Dec. 1996.
- [2] J. D. Cho, "Min-cost flow based min-cost rectilinear Steiner distance preserving tree construction," *Int. Symp. Physical Design*, Apr. 1997, pp. 82–87.
- [3] J. D. Cho, private communication, 1997.
- [4] H. A. Choi and A. H. Esfahanian, "A message-routing strategy for multicomputer systems," *Networks*, vol. 22, pp. 627–646, 1992.
- [5] H. A. Choi, A. H. Esfahanian, and B. C. Houck, "Optimal communication trees with application to hypercube multicomputers," in *Proc. 6th Int. Conf. Theory and Application of Graph Theory*, 1988, pp. 245–264.
- [6] J. P. Cohoon and J. L. Ganley, "Rectilinear interconnections in the presence of obstacles," in *Advanced Routing in Electronic Modules*, Y. T. Wong and M. Pecht Eds. Boca Raton, FL: CRC Press, 1996.
- [7] J. P. Cohoon and D. S. Richards, "Optimal two-terminal  $\alpha - \beta$  wire routing," *Integration: VLSI J.*, vol. 6, pp. 35–57, 1988.
- [8] J. Cong, A. B. Kahng, and K.-S. Leung, "Efficient heuristics for the minimum shortest path Steiner arborescence problem with applications to VLSI physical design," in *Proc. Int. Symp. Physical Design*, Apr. 1997, pp. 88–95.
- [9] J. Cong and K.-S. Leung, "On the construction of optimal or near-optimal Steiner arborescence," Dept. Computer Science, Univ. of California, Los Angeles, Tech. Rep. CSD-960033, 1996.
- [10] J. Cong, K. S. Leung, and D. Zhou, "Performance driven interconnect design based on distributed RC delay model," in *Proc. ACM/IEEE Design Automation Conf.*, June 1993, pp. 606–611.
- [11] J. Cong and P. H. Madden, "Performance driven routing with multiple sources," *IEEE Trans. Computer-Aided Design* vol. 16, pp. 410–419, Apr. 1997.
- [12] J. Córdova and Y. H. Lee, "A heuristic algorithm for the rectilinear Steiner arborescence problem," CIS Department, Univ. of Florida, Tech. Rep. TR-94-025, 1994.
- [13] T. H. Cormen, C. E. Leiserson, and R. L. Rivest, *Introduction to Algorithms*. Cambridge, MA: MIT Press, 1990.
- [14] M. X. Goemans and Y. S. Myung, "A catalog of Steiner tree formulations," *Networks*, vol. 23, pp. 19–28, 1993.
- [15] M. Hanan, "On Steiner's problem with rectilinear distance," *SIAM J. Appl. Math.*, vol. 14, pp. 255–265, 1966.
- [16] J. M. Ho, M. T. Ko, T. H. Ma, and T. Y. Sung, "Algorithms for rectilinear optimal multicast tree problem," in *Proc. Int. Symp. Algorithms and Computation*, June 1992, pp. 106–115.
- [17] F. K. Hwang, D. S. Richards, and P. Winter, *The Steiner Tree Problem*. Amsterdam, The Netherlands: North-Holland, 1992.
- [18] A. B. Kahng and G. Robins, "A new class of iterative Steiner tree heuristics with good performance," *IEEE Trans. Computer-Aided Design*, vol. 11, pp. 893–902, July 1992.
- [19] ———, *On Optimal Interconnections for VLSI*. Norwell, MA: Kluwer, 1995.
- [20] R. R. Ladeira de Matos, "A rectilinear arborescence problem," Ph.D. dissertation, University of Alabama, Tuscaloosa, 1979.
- [21] Y. Lan, A. H. Esfahanian, and L. M. Ni, "Multicast in hypercube multiprocessors," *J. Parallel Distributed Computing*, vol. 8, pp. 30–41, 1990.
- [22] K. S. Leung and J. Cong, "Fast optimal algorithms for the minimum rectilinear Steiner arborescence problem," *Algorithmica*, to be published. See also Computer Science Department, University of California, Los Angeles, UCLA Computer Science Tech. Rep. CSD-960037, 1996; and

- Proc. IEEE Symp. Circuits and Systems.*, June 1997, pp. 1568–1571 (extended abstract).
- [23] ———, “IDEA: An efficient near-optimal heuristic for the minimum rectilinear Steiner arborescence problem,” unpublished.
  - [24] L. Nastansky, S. M. Selkow, and N. F. Stewart, “Cost minimal trees in directed acyclic graphs,” *Zeitschrift für Oper. Res.*, vol. 18, pp. 59–67, 1974.
  - [25] S. K. Rao, P. Sadayappan, F. K. Hwang, and P. W. Shor, “The rectilinear Steiner arborescence problem,” *Algorithmica*, vol. 7, pp. 277–288, 1992.
  - [26] J. P. Sheu and M. Y. Su, “A multicast algorithm for hypercube multiprocessors,” in *Int. Conf. Parallel Processing*, 1992, vol. 3, pp. 18–22.
  - [27] G. E. T ellez and M. Sarrafzadeh, “On rectilinear distance-preserving trees,” in *Proc. IEEE Symp. Circuits and Systems*, June 1995, vol. 1, pp. 163–166.
  - [28] V. A. Trubin, “Subclass of the Steiner problems on a plane with rectilinear metric,” *Cybernetics*, vol. 21, pp. 320–322, 1985.



**Jason Cong** (S’88–M’90–SM’96) received the B.S. degree in computer science from Peking University, China, in 1985 and the M.S. and Ph.D. degrees in computer science from the University of Illinois at Urbana-Champaign in 1987 and 1990, respectively.

He currently is an Associate Professor in the Computer Science Department of the University of California, Los Angeles (UCLA,) and Codirector of the VLSI CAD Laboratory. His research interests include layout and logic synthesis for high-performance, low-power very-large-scale-integration (VLSI) circuits, design and optimization of VLSI interconnects, field programmable gate array (FPGA) synthesis, and reconfigurable computing. He has published more than 100 research papers and led more than 20 research projects supported by the Defense Advanced Research Project Agency, National Science Foundation (NSF), and a number of industrial sponsors in these areas. He is an Associate Editor of *ACM Transactions on Design Automation of Electronic Systems*.

Dr. Cong received the Ross J. Martin Award for Excellence in Research from the University of Illinois in 1989, the NSF Research Initiation Award and NSF Young Investigator Award in 1991 and 1993, respectively, the Northrop Outstanding Junior Faculty Research Award from UCLA in 1993, and the Best Paper Award from IEEE TRANSACTIONS ON COMPUTER-AIDED DESIGN OF INTEGRATED CIRCUITS AND SYSTEMS in 1995.

**Andrew B. Kahng** (A’89), for a photograph and biography, see this issue, p. 1.



**Kwok-Shing Leung** (M’97) received the B.S. degree in computer science and engineering from the University of California, Los Angeles (UCLA,) in 1993 and the M.S. degree in computer science from Carnegie-Mellon University, Pittsburgh, PA, in 1995. He currently is pursuing the Ph.D. degree in computer science at UCLA.

He previously was with AT&T Bell Laboratories (Summer 1993), Intel Corporation (Summer 1994, 1995–1996), and Cadence Design Systems (1996–1997). He currently is a Senior Software Engineer with Magma Design Automation, Palo Alto, CA, developing next-generation physical design tools. His research interests include physical design of systems, and algorithm design and analysis.

Mr. Leung is a member of Tau Beta Pi and the Golden Key Honor Society. He received the Peat Warwick Scholarship from the Golden Key Honor Society and the UCLA President’s Undergraduate Fellowship in 1992. He received the Outstanding Senior Award from the UCLA Computer Science Department and the Outstanding Bachelor Award from the UCLA School of Engineering in 1993.